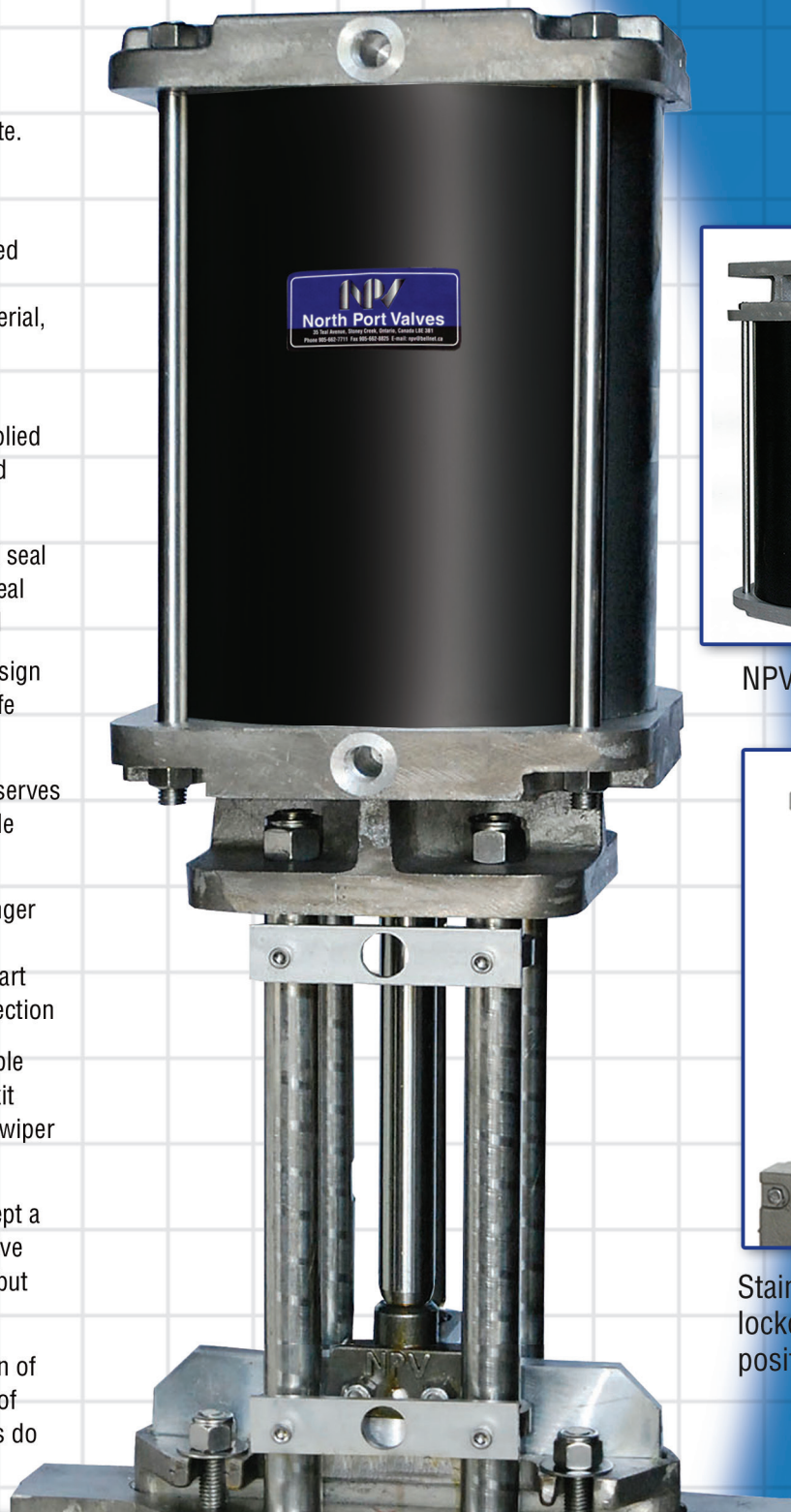


## Features and Benefits :

1. All cylinders manufactured by NPV mount directly to our valves eliminating need for an adapter plate. All gates are machined to adapt to manual or automated operation
2. Cylinder barrels are manufactured of a lightweight, high-strength, corrosion-resistant composite material, designed specifically for adverse environments
3. All cylinder operated valves supplied with Stainless Steel lockout bar and limit switch brackets
4. Piston seal is an elastomer quad seal providing longer life and positive seal compared to a standard o-ring seal
5. Cylinder stem seal is a U-cup design protected by a scraper for longer life and positive sealing
6. Length of lower cylinder bridge serves as guide for stem, reducing any side torque and extending seal life
7. When used on high cycle scavenger valves, extra precaution is taken to prevent stem and clevis coming apart by threading and pinning the connection
8. Cylinders are easily field repairable by replacing complete soft goods kit which includes o-rings, quad seal, wiper and u-cup
9. NPV Valves are designed to accept a new cylinder or convert manual valve to automated operation in line but under ZERO line pressure
10. Due to light weight construction of all NPV cylinders and the strength of 4-post topworks, most installations do not require additional support



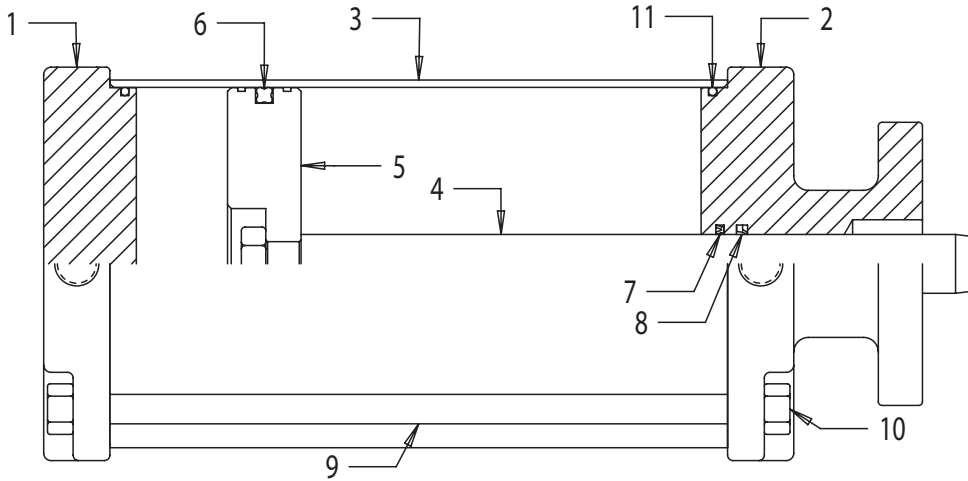
NPV cylinders: 5"-20" bore



Stainless Steel bar for cylinder lockout in open and closed position

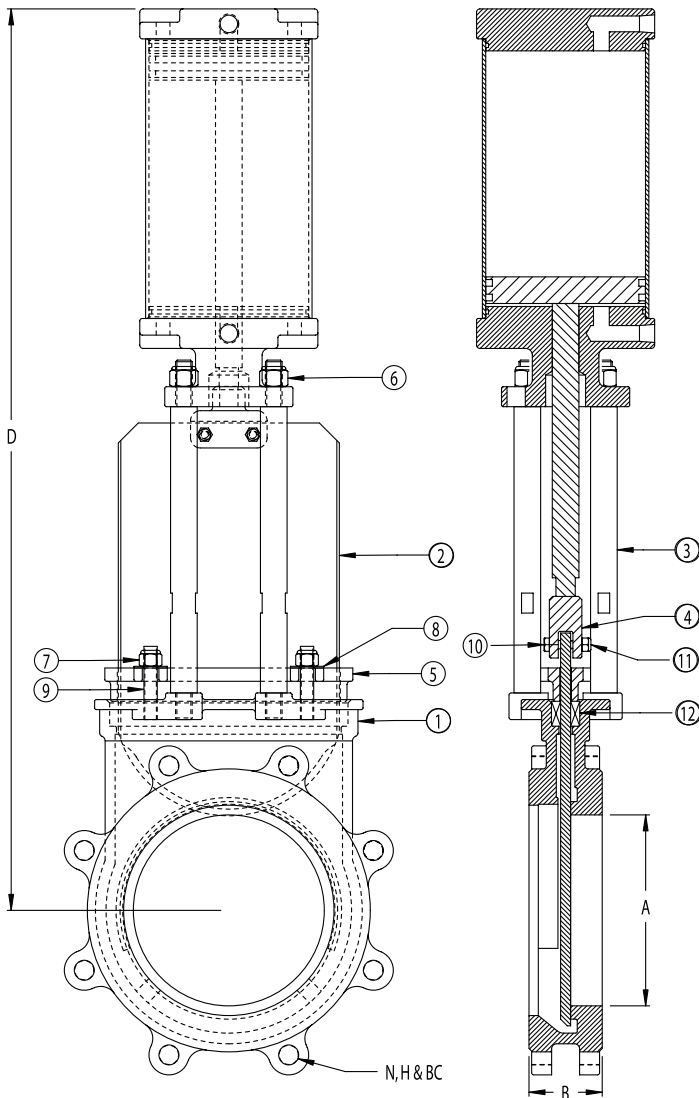
# NPV

# Pneumatic Cylinder



PART #	DESCRIPTION	MATERIAL	QTY.
1	CAST TOP CAP	ALUMINUM 356	1
2	CAST BOTTOM CAP	ALUMINUM 356	1
3	CYLINDER	ALUMINUM	1
4	PISTON ROD	CHROMED*	1
5	PISTON HEAD	ALUMINUM	1
6	PISTON SEAL	BUNA	1
7	ROD SEAL	VITON	1
8	ROD WIPER	POLYURERTHANE	1
9	TIE ROD	303 S.S.	4
10	TIE ROD NUT	304 S.S.	8
11	O-RING	BUNA	1

BORE SIZE	TIE RODS	
	DIA.	TORQUE
5"	1/2"	15-30
6"	1/2"	15-30
8"	1/2"	30-70
10"	5/8"	55-110
12"	5/8"	70-110
14"	5/8"	70-110
16"	5/8"	70-110
20"	5/8"	70-110



#	PART NAME	MATERIAL
1	BODY	CG8M (317 S.S.)
2	GATE	316L S.S.
3	STANCHION	303 S.S.
4	COUPLING	CG8M (317 S.S.)
5	GLAND	CG8M (317 S.S.)
6	NYLOCK NUT	18.8 S.S.
7	GLAND NYLOCK NUT	18.8 S.S.
8	GLAND WASHER	18.8 S.S.
9	GLAND STUD	18.8 S.S.
10	COUPLING BOLT	18.8 S.S.
11	COUPLING NYLOCK NUT	18.8 S.S.
12	PACKING	SYNTHETIC (2-12PH)
13	AIR CYLINDER ASSEMBLY	N/A

	3"	4"	6"	8"	10"	12"	14"	16"	18"	20"	24"	30"
<b>A</b>	3"	3 3/4"	5 3/4"	7 5/8"	9 1/2"	11 1/8"	13 3/16"	15 35/64"	17 7/16"	19 11/32"	23"	28 5/16"
<b>B</b>	2"	2"	2 1/4"	2 3/4"	2 3/4"	3"	3"	3 1/2"	3 1/2"	4 1/2"	4 1/2"	4 1/2"
<b>N(HOLES)</b>	4	8	8	8	12	12	12	16	16	20	20	28
<b>H(TAP)</b>	5/8" - 11	5/8" - 11	3/4" - 10	3/4" - 10	7/8" - 9	7/8" - 9	1" - 8	1" - 8	1 1/8" - 7	1 1/8" - 7	1 1/4" - 7	1 1/4" - 7
<b>BC</b>	6"	7 1/2"	9 1/2"	11 3/4"	14 1/4"	17"	18 3/4"	21 1/4"	22 3/4"	25"	29 1/2"	36"
<b>D</b>	20 3/8"	22 1/4"	28 1/4"	34"	40"	47 1/2"	54 1/4"	63 3/4"	68 1/2"	75 3/4"	87"	105 1/4"