

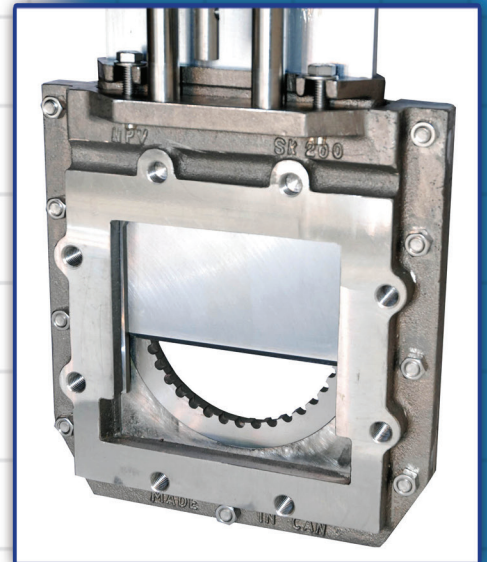
# NPV HD/MD Reject Chamber Valve Round by Square Flanged

## Series 375

### Features and Benefits :

1. The NPV HD/MD Reject Chamber Valve is designed specifically to handle the wire, staples, glass and sand typically found in recycle paper mill reject systems
2. Cavity free, precision machined, special body casting prevents accumulation of solids and trash which would prohibit the valve from activating the open/close limit switch sensors
3. Gate, seat cartridge and gate guide are 400SS heat treated and hardened, which extends the life cycle of the valve
4. Valve design allows for complete factory rebuild to like new condition at 50%-60% of the current list price
5. Gates are chrome plated to reduce friction and valve torque extending the life of the packing
6. All NPV/DUCO valves are supplied with NPV high cycle pneumatic cylinder, limit switch brackets and stainless steel cylinder lockout
7. HD/MD Reject Chamber Round by Square Flanged Valve is available in sizes 6", 8" & 10"

**Note:** Valves to be installed in the horizontal position

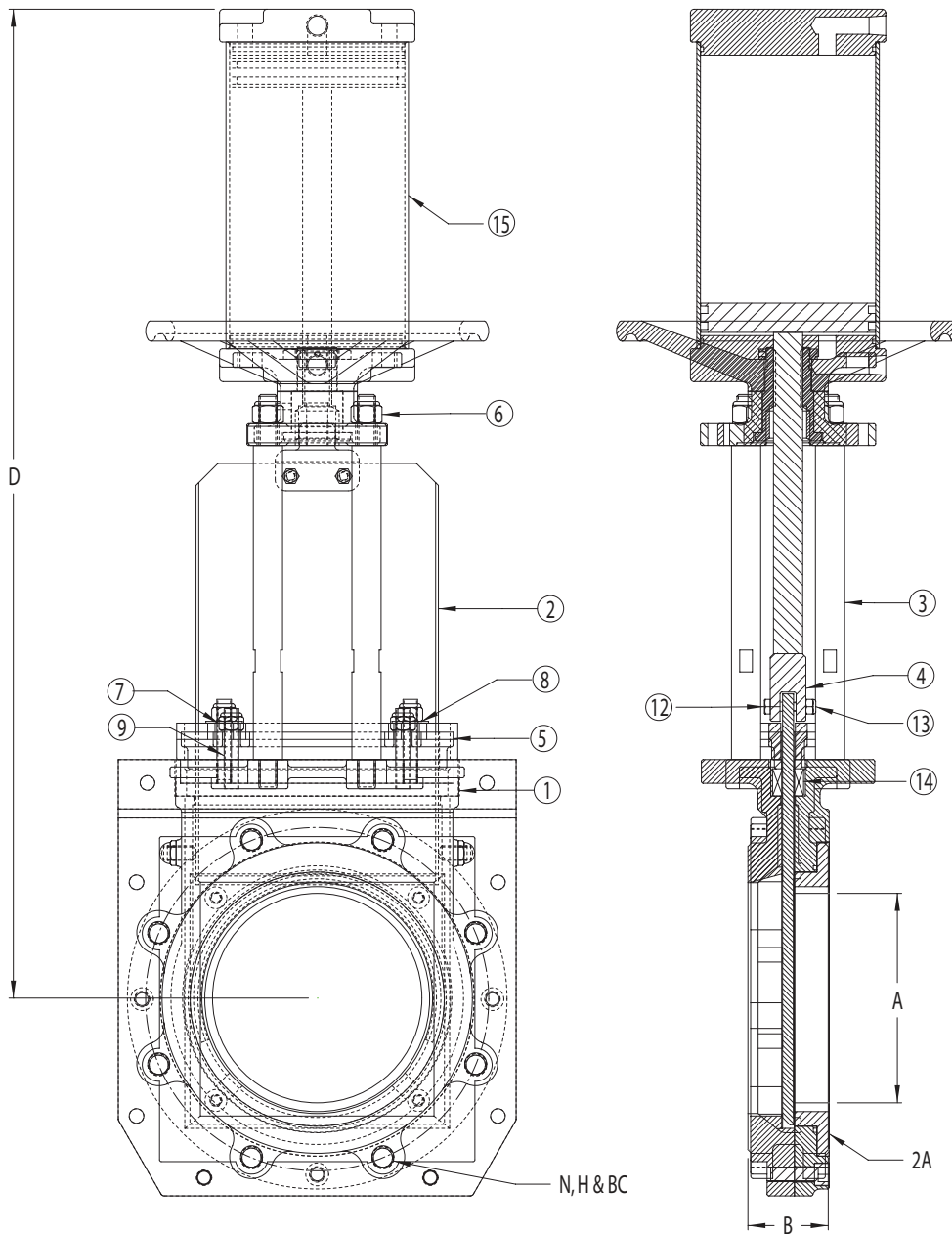


Square flanged, outlet side



Factory replaceable - hardened gate, cartridge and guide for extremely abrasive conditions

# NPV HD/MD Reject Chamber Valve Round by Square Flanged



	6"	8"	10"
<b>A</b>	5 3/4"	7 5/8"	9 1/2"
<b>B</b>	2 1/4"	2 3/4"	2 3/4"
<b>N(HOLES)</b>	8	8	12
<b>H(TAP)</b>	3/4" - 10	3/4" - 10	7/8" - 9
<b>BC</b>	9 1/2"	11 3/4"	14 1/4"
<b>D</b>	28 1/4"	34"	40"

#	PART NAME	MATERIAL
1	BODY	CG8M (317 S.S.)
2	HARDENED GATE	STAINLESS STEEL
2A	HARDENED INSERT RING	STAINLESS STEEL
3	STANCHION	303 S.S.
4	COUPLING	CG8M (317 S.S.)
5	GLAND	CG8M (317 S.S.)
6	NYLOCK NUT	18.8 S.S.
7	GLAND NYLOCK NUT	18.8 S.S.
8	GLAND WASHER	18.8 S.S.
9	GLAND STUD	18.8 S.S.
12	COUPLING BOLT	18.8 S.S.
13	COUPLING NYLOCK NUT	18.8 S.S.
14	PACKING	SYNTHETIC (2-12PH)
15	AIR CYLINDER ASSEMBLY	N/A